

# Q-Flow

Flow meter for gases & liquids built on the variable area, tube-and-float principle



The Q-Flow is a new, modern flow meter for gases and liquids built on the variable area, tube-and float principle. Designed in close collaboration with users, it combines our long experience with practical shop-floor requirements. Whatever your application, we'll be able to offer a solution that gives you the best value for money. Please note the Q-Flow's practical plug-in measuring module, simple installation, and attractive design. The Q-Flow offers a compact, modular design as well as stable and precise regulation. The unit is leakproof when closed, which allows for more accurate measurements using a larger variety of different liquids.

## FEATURES

- Compact, modular construction
- Stable and precise regulation
- Leak-proof when closed
- Customer specific versions

## CHARACTERISTICS

- Aluminum or stainless steel
- Different seal materials
- 15 turn valve spindle, no hysteresis (valve optional)
- Clockwise or counter-clockwise closing
- Max. pressure: up to 290 psig
- Temperature range -40 to +150°
- Flow Range min 0 – 10 NI/h, max 0 – 3100 NI/h with delta-p 14.5 psi

## TECHNICAL DATA

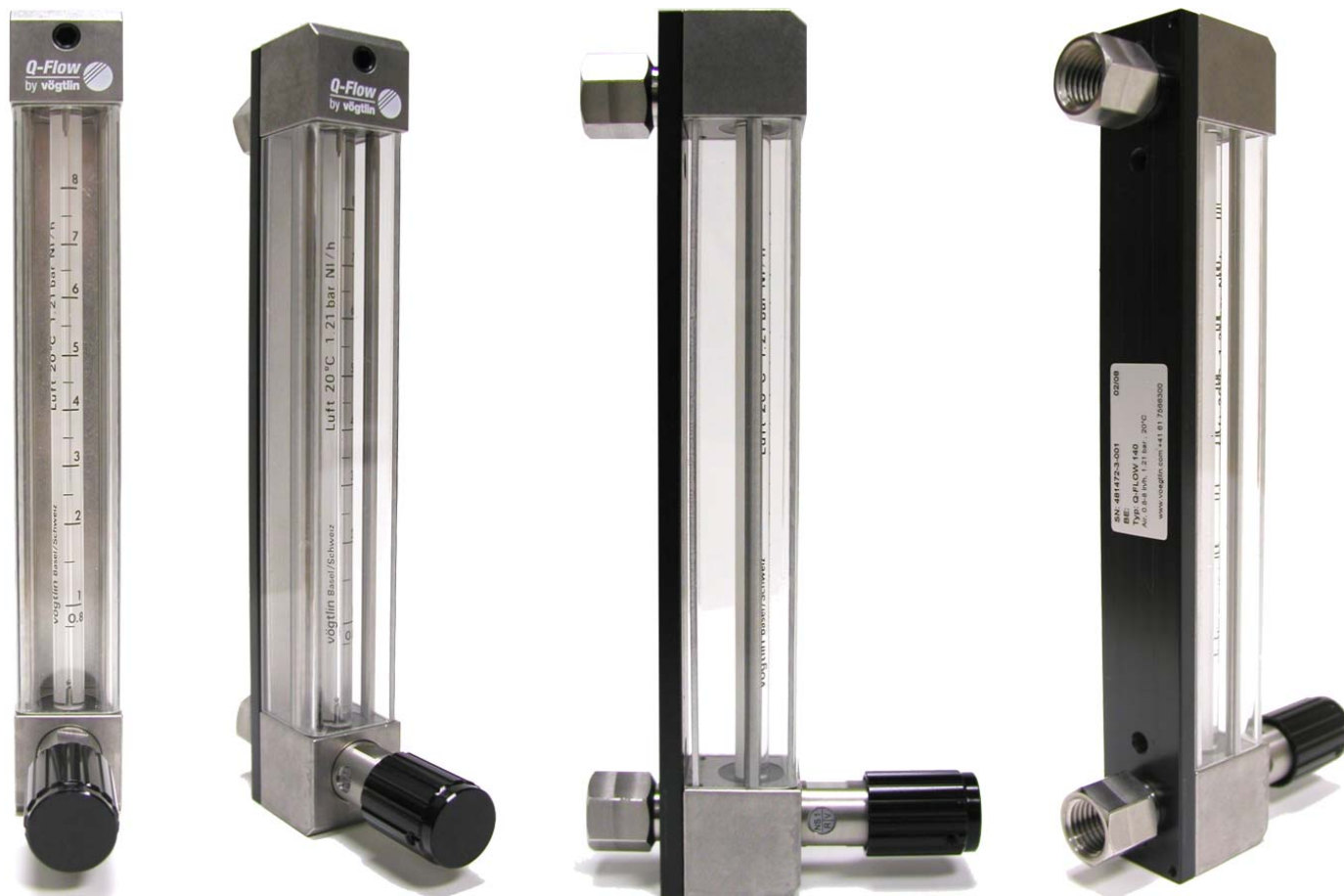
Type	Q-Flow 55	Q-Flow 80	Q-Flow 140
Measuring range width	10:1	10:1	10:1
Accuracy in % of the final value	±5%	±4%	±2%
Graduated measuring glass length	55 mm	80 mm	140 mm
Scale length	40 mm	65 mm	120 mm
Float	spherical	spherical	spherical
Max. pressure	290 psi	290 psi	230 psi
Max. temperature	212° F	212° F	212° F
Max. pressure drop	8 in. H2O	8 in. H2O	12 in. H2O

Thermal Mass Flow  
8915 Research Dr. Suite 100, Irvine, California 92618  
TEL: 949.748.5960 FAX: 949.748.5961  
Email: [info@thermalmassflow.com](mailto:info@thermalmassflow.com)  
[www.thermalmassflow.com](http://www.thermalmassflow.com)

 THERMAL  
**MASS FLOW**<sup>™</sup>  
A Monkey Industrial Supply Company



# Q-Flow Variable Area Flow Meter



## TERMS AND CONDITIONS

### PAYMENTS AND TERMS

Prices quoted are good for 30 days unless otherwise noted. Thermal Mass Flow accepts cash, check, wire transfer, or credit cards. All prices are quote in US Dollars, unless otherwise noted. All sales are final. Standard shipping is \$10 USD per meter. All goods remain the property of Thermal Mass Flow until paid in full. Payment is due at time of order unless credit has been granted. All past due accounts accrue a service fee of 3% per month. Thermal Mass Flow is a DBA of Komodo Enterprises, Inc., a Nevada Corporation.

### PRIVACY STATEMENT

Komodo Enterprises Inc. respects your privacy and will not divulge your contact information to any third party organization or entity without your express permission. In addition, our web sites gather no unauthorized information from your computer during your visit with us. All phone calls to Thermal Mass Flow may be monitored or recorded.

### ACCURACY

Thermal Mass Flow assumes no responsibility for errors or omissions in this web site or documents which are referenced by or linked to this site. This site could include technical or other inaccuracies. Changes are periodically added to the information, and Thermal Mass Flow may change the products or services described at any time. Contact Customer Service for further information before relying on any information contained herein. The information provided on this site, including text, images, and links, are provided "AS IS" by Thermal Mass Flow solely as a convenience to its visitors. This information is without any warranties, express or implied, including but not limited to warranties of merchantability, fitness for a particular purpose or non-infringement.

### WARRANTY AND INDEMNITY

Thermal Mass Flow warrants products it manufactures for a period of 90 days to the original purchaser from the date of purchase. Items not manufactured by Thermal Mass Flow are limited to their own manufacturer's warranties. This warranty does not apply to defects due directly or indirectly to misuse, negligence, accidents, abuse, repairs, or alterations or lack of maintenance. This is Thermal Mass Flow's sole written warranty and any and all warranties that may be implied by law, including any merchantability or fitness, for any particular purpose, are hereby limited to the duration of this written warranty. Thermal Mass Flow does not warrant or represent that the merchandise complies with the provisions of any law or acts. In no event shall Thermal Mass Flow liability under this warranty exceed the purchase price paid for the product. Both parties agree to binding arbitration in Las Vegas, Nevada. Thermal Mass Flow shall in no event be liable for death, injuries to persons or property or for incidental, and contingent, special, or consequential damages arising from the use of our products. Thermal Mass Flow warrants products only for the specific use expressly agreed to at time of purchase by Thermal Mass Flow in writing. All claims, including claims covered under the limited warranty, are subject to inspection and investigation before Buyer's claim is settled. Any parts returned for warranty or repair will not be accepted without an RMA number and must be shipped pre-paid. Contact Customer Service with the original bill of sale to obtain an RMA number. CMOSens is a trademark of Sensinirion AG.

Thermal Mass Flow  
8915 Research Dr. Suite 100, Irvine, California 92618  
TEL: 949.748.5960 FAX: 949.748.5961  
Email: [info@thermalmassflow.com](mailto:info@thermalmassflow.com)  
[www.thermalmassflow.com](http://www.thermalmassflow.com)

 THERMAL  
MASS FLOW™  
A Monkey Industrial Supply Company